

# Labor Market Report

April 2022

Serving the Lower Rio Grande Valley  
Workforce Development Area (WDA):  
(Hidalgo, Starr & Willacy Counties)



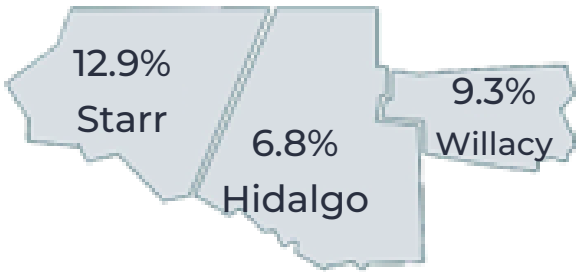
**workforce**  
SOLUTIONS

A proud partner of the American Job Center network

## Unemployment Rates

### Workforce Solutions WDA

decreased from 7.4% to 7.2%

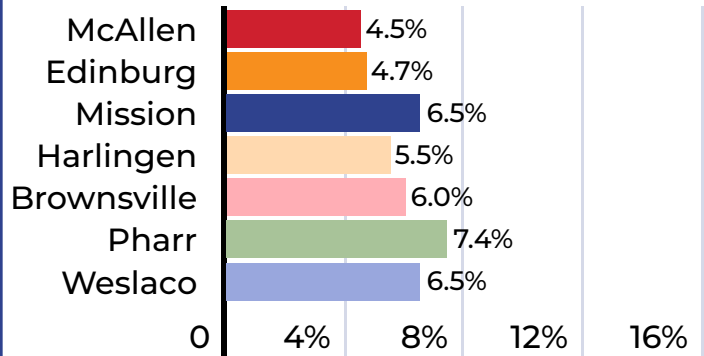


**RGV 6.8%**

▼ **0.2%**

Mar-22

April-22



0.0% National

The national unemployment rate remained the same at 3.6%.

-0.1% Texas

Texas unemployment rate decreased to 4.3%.

Seasonally Adjusted



Indicates a decrease in Unemployment Rate



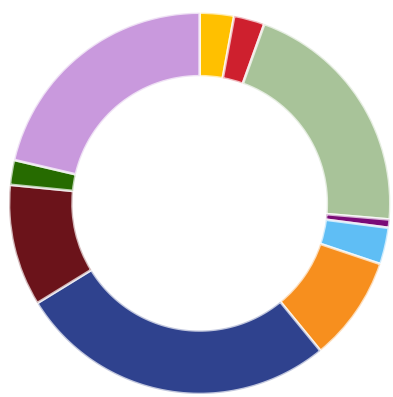
Indicates an increase in Unemployment Rate

## Employment Change

### Border Region Employment

	Mcallen MSA	Brownsville MSA	Laredo MSA	Total Monthly Change
Total All Non-Agriculture	1,000 ▲	500 ▲	300 ▲	1,800 ▲

### Border Region Employment



Industry	Total Employment
Mining, Logging and construction	15,900
Manufacturing	14,400
Trade, Transportation, and Utilities	113,300
Information	4,000
Financial Activities	17,100
Professional and Business Services	48,300
Education and Health Services	147,600
Leisure and Hospitality	55,900
Other Services	11,600
Government	116,000



TRADE, TRANSPORTATION & UTILITIES

▼ **-700**

McAllen MSA -300  
Brownsville MSA -200  
Laredo MSA -200



GOVERNMENT (Public Ed, Law Enforcement)

▲ **800**

McAllen MSA +400  
Brownsville MSA +300  
Laredo MSA +100

# Labor Market Report

April 2022

Serving the Lower Rio Grande Valley

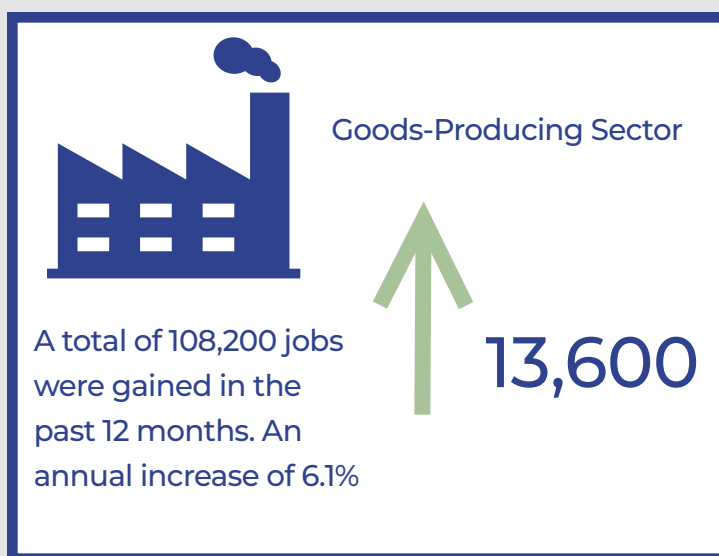
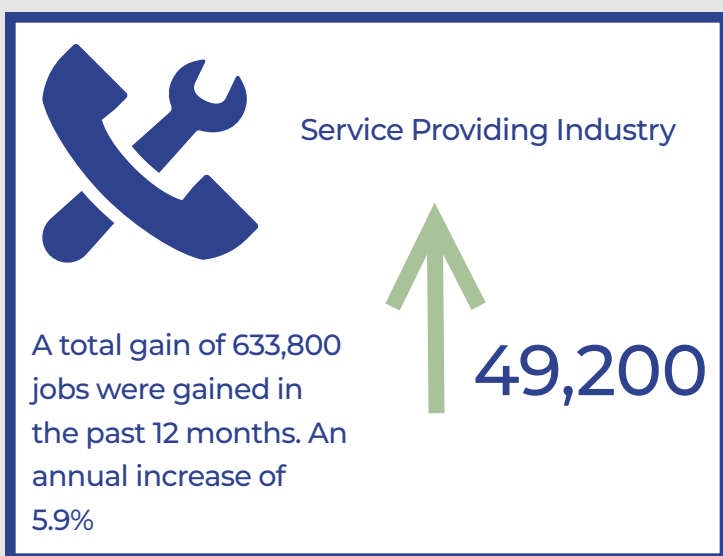
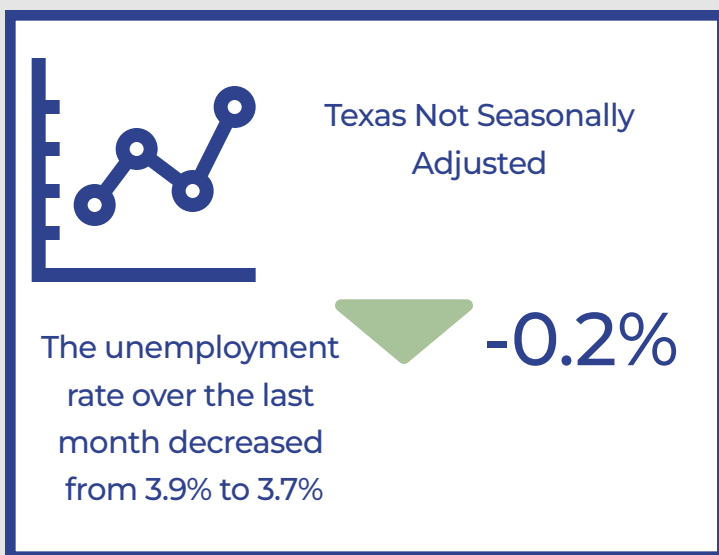
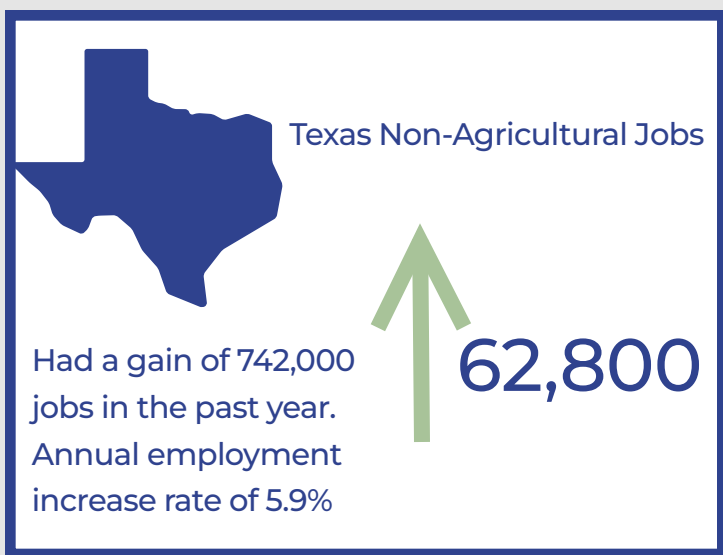
Workforce Development Area (WDA): (Hidalgo, Starr & Willacy Counties)



workforce SOLUTIONS

A proud partner of the AmericanJobCenter network

## Statewide Overview



## Business Engagement

### RGV Economy

The Rio Grande Valley unemployment rate of 6.8% was the lowest since February 2020 pre-pandemic numbers of 6.7%. The RGV economy continues to add jobs for the third month consecutively with a total of 1,500 new jobs in the McAllen and Brownsville metropolitan statistical areas (MSA). In terms of annual job growth, McAllen MSA placed number 9 out of 25 in the state of Texas, and placed number 11 in terms of monthly job growth. In April, WFS hosted 14 hiring events with 72 participating employers and 478 job seekers in attendance, which resulted in 195 hires. Additionally, WFS was able to serve a total of 1,731 employers representing 3,109 job openings, which resulted in a total of 443 hires for the month.

## Industry Needs

### Information Technology (IT):

Workforce Solutions Business Relations Representatives (BRR) worked closely with ZOHO executives and the site selection team to provide vital information (WFS IT Assessment) to assist them in making a site selection. The role of WFS has been to provide labor market information and assist with recruitment efforts through job advertisement and recruitment of candidates. As such the BRR team provided a tour of the Mission WFS Office and Services available to Zoho executives. Additionally, WFS hosted 2 virtual informational sessions to connect job seekers with the business. As a result, ZOHO has initially hired a sales account executive with a salary of approximately 45k and plans to hire an additional 100 individuals within the near future.

## Business Needs



3,109 Job Openings

As always, thanks again for your support and participation!

Texas Labor Market Review

Local Labor Market Reports

SkillUp LRGV Metrix Learning

Subscribe to the Monthly LMI

